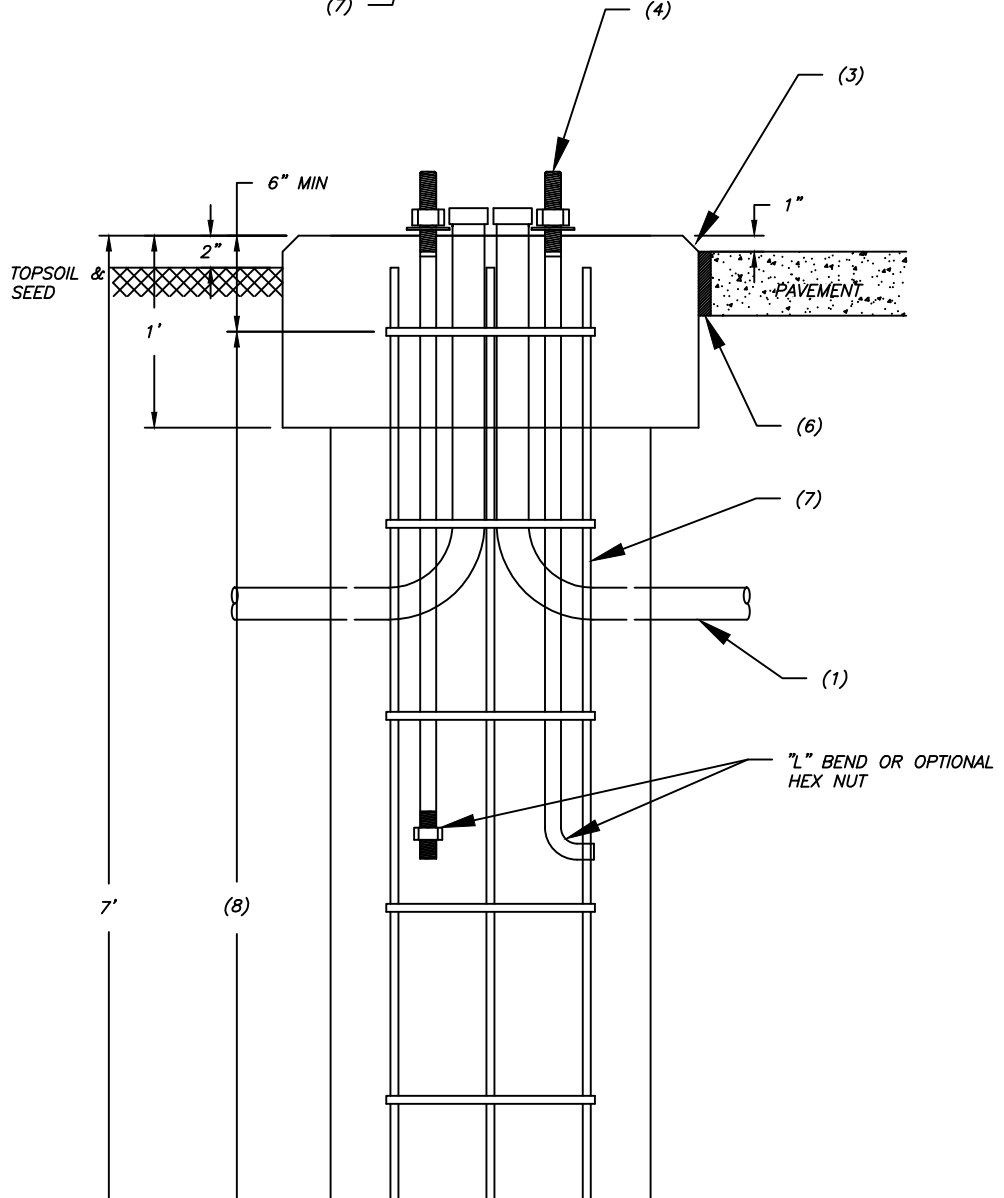
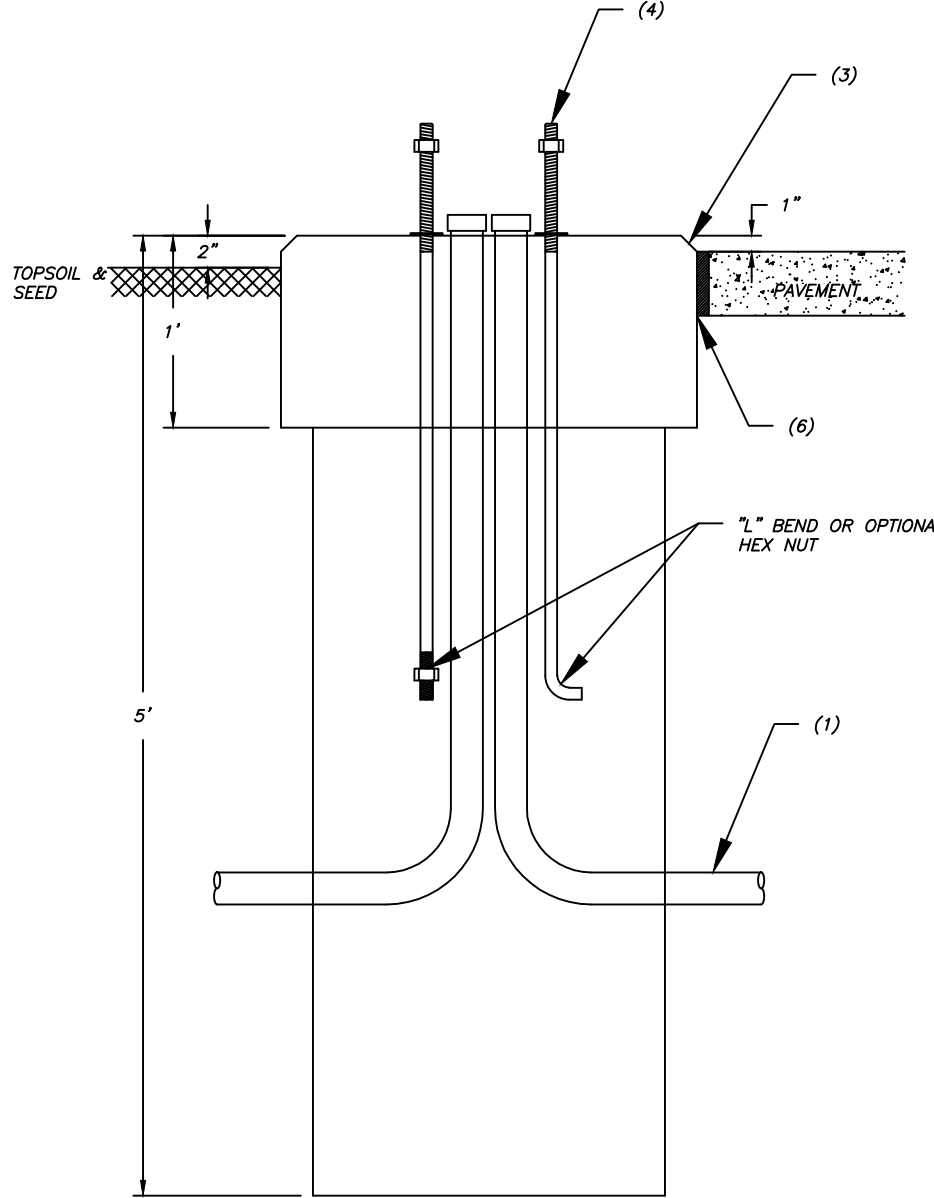
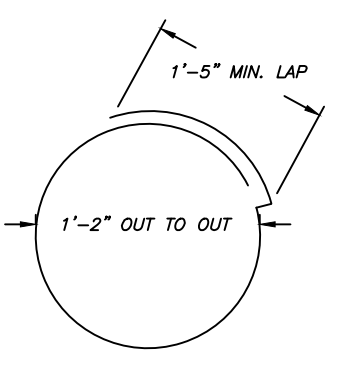
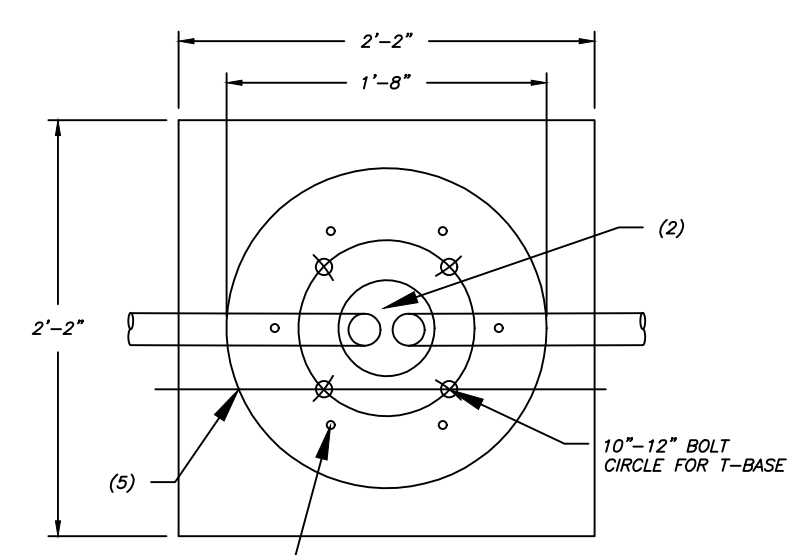
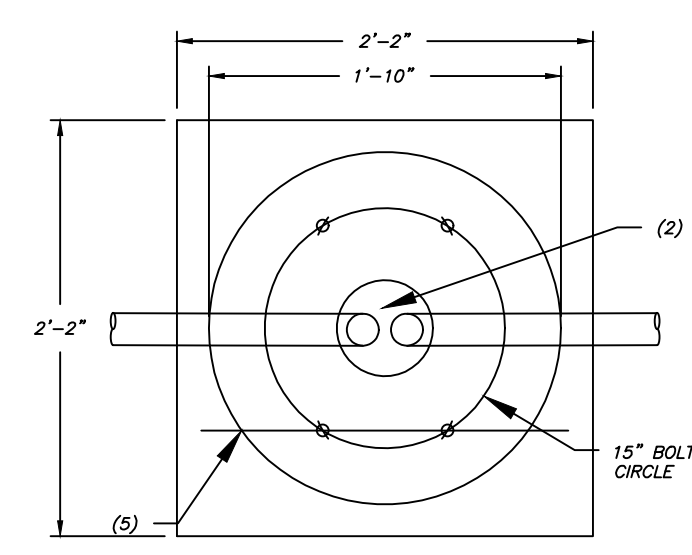


A BEEHIVE BASE (BB)
D-8-1 SCALE: 1" = 1'-0"

B BEEHIVE BASE ALT (BBA)
D-8-1 SCALE: 1" = 1'-0"

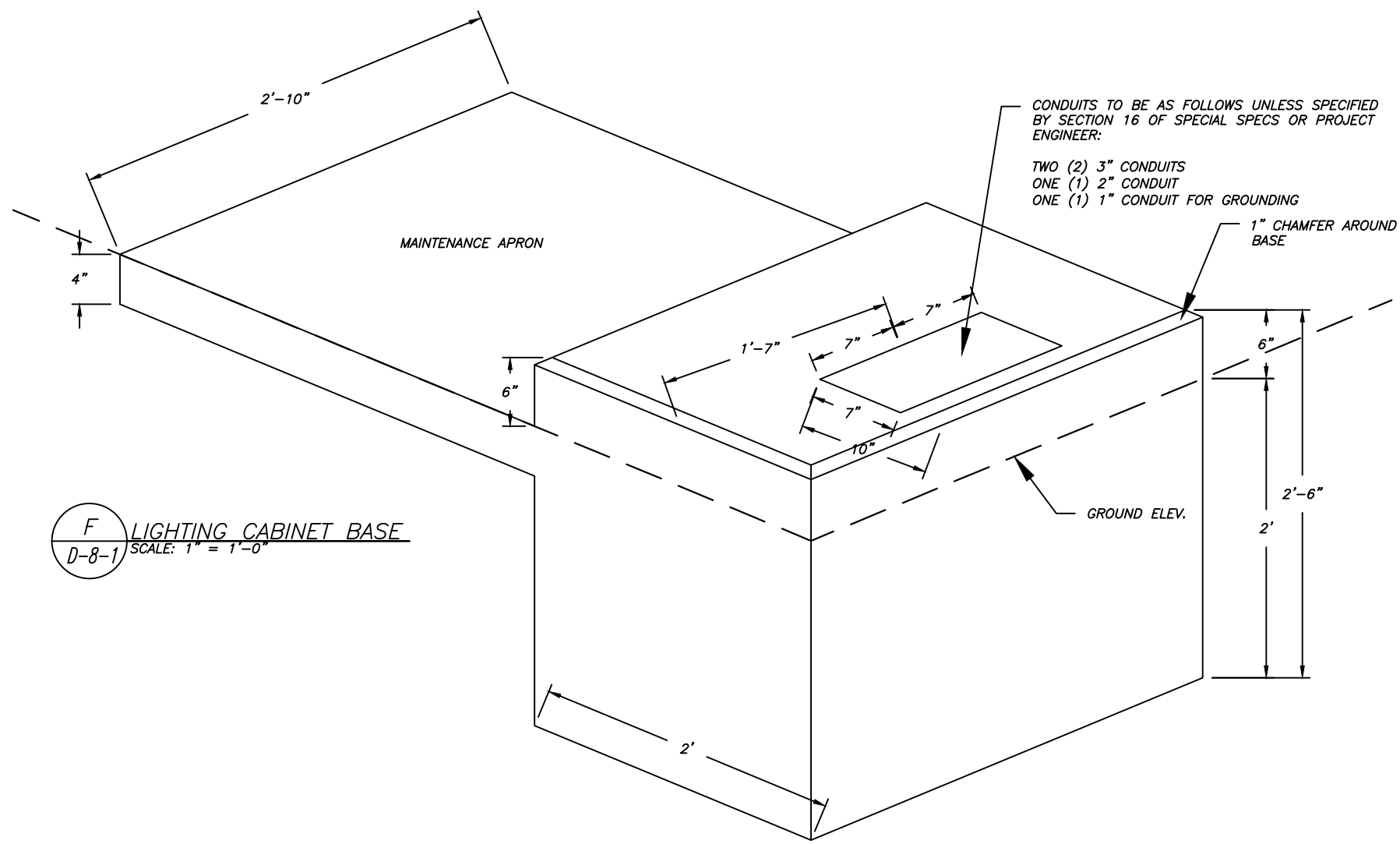
C POSTOP/WASHINGTON BASE (PT&W)
D-8-1 SCALE: 1" = 1'-0"



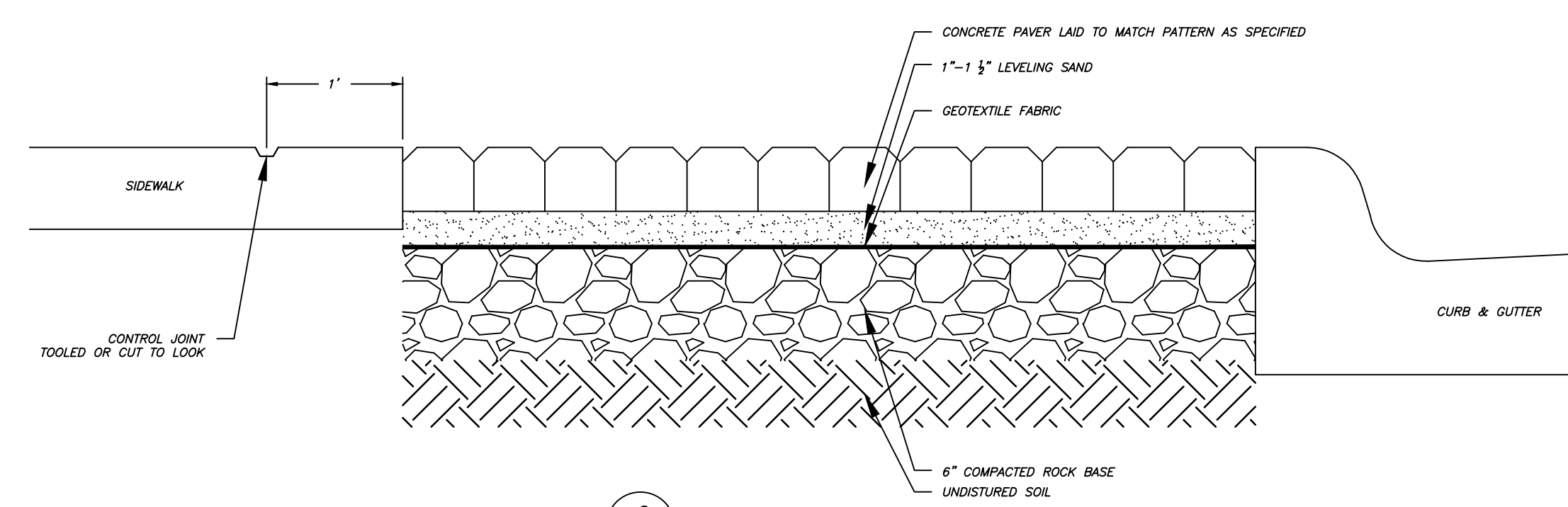
D MATCHSTICK BASE (MS)
D-8-1 SCALE: 1" = 1'-0"

E ACORN BASE (AC)
D-8-1 SCALE: 1" = 1'-0"

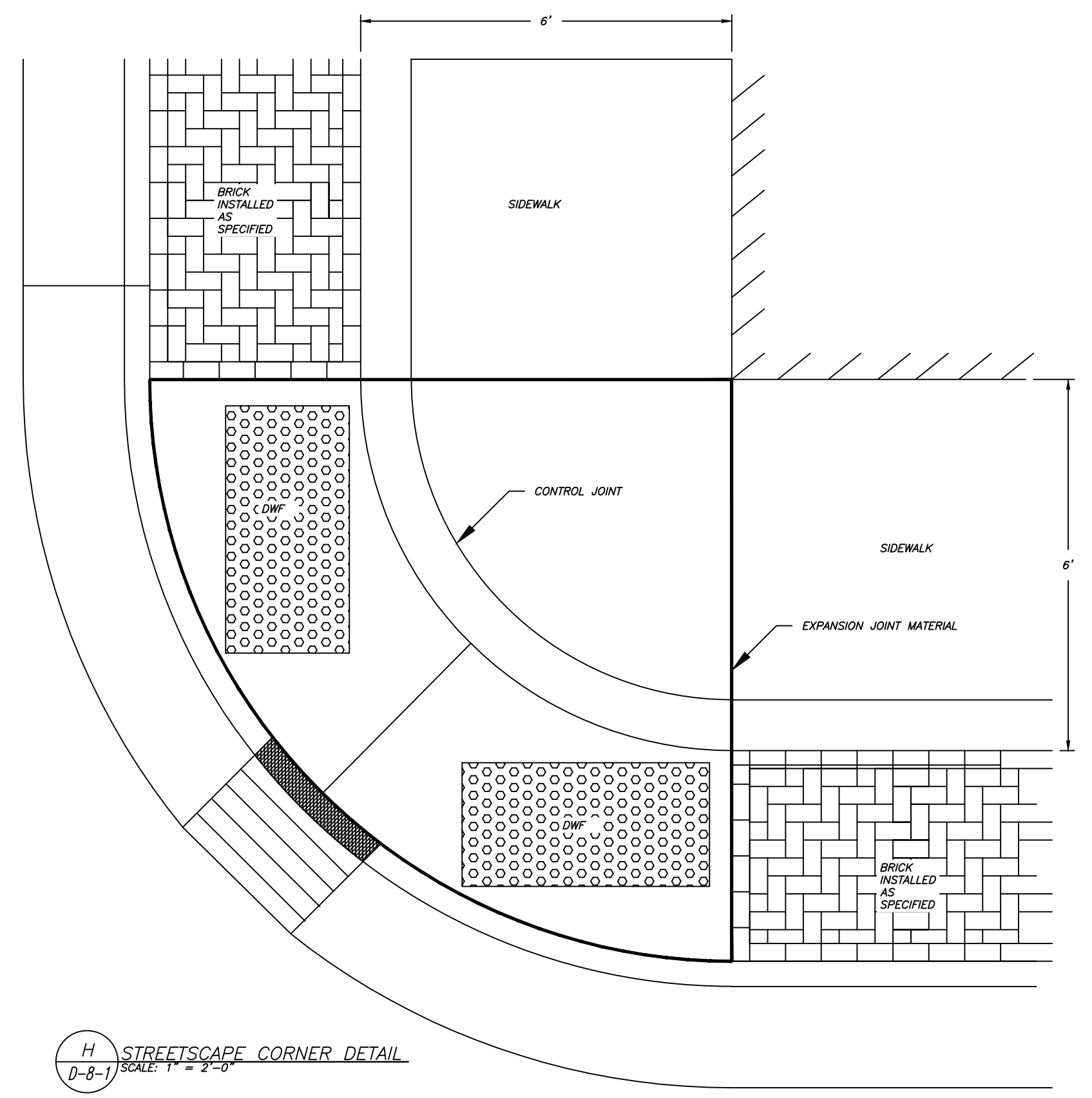
- NOTES:**
- (1) THE MINIMUM DEPTH OF CONDUIT EXITING THE BASE SHALL BE 24". THE MAXIMUM DEPTH OF CONDUIT EXITING THE BASE SHALL BE 30".
 - (2) 2" CONDUIT TO BE INSTALLED WITHIN 6" DIA. OF CENTER.
 - (3) ALL BASES TO BE FORMED AND HAVE A 1" CHAMFER ALL AROUND.
 - (4) CITY WILL PROVIDE ANCHOR BOLTS AND EXPOSURE DIMENSION.
 - (5) ANCHOR RODS SHALL BE ORIENTED PARALLEL TO THE ROADWAY.
 - (6) 1/2" PREFORMED FILLER AS APPROVED BY ENGINEER.
 - (7) (8) NO. 4 X 6'-8" STEEL REINFORCEMENT
 - (8) (7) NO. 4 X 5'-1" STEEL REINFORCEMENT @ 1'-0" C-C



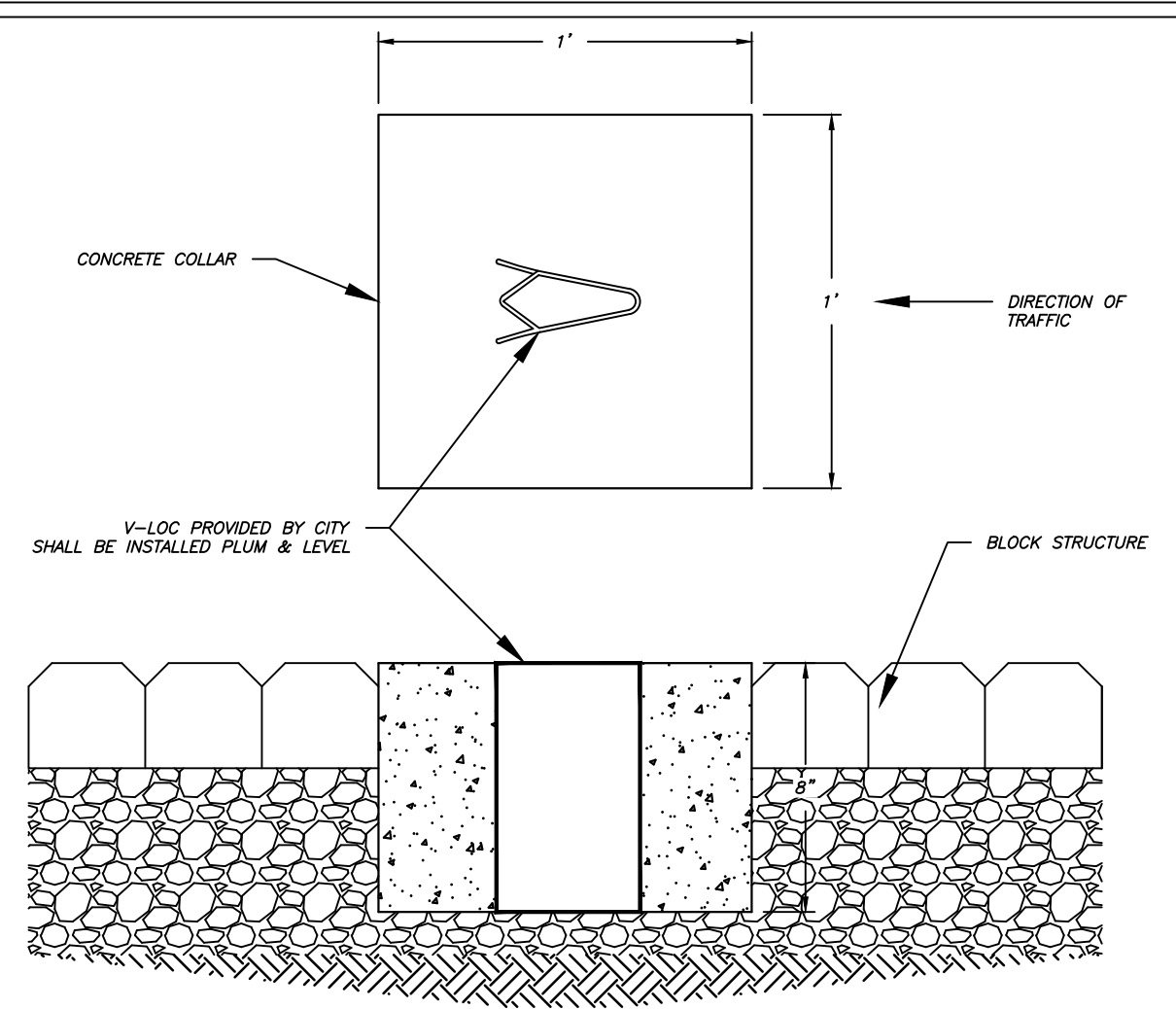
F LIGHTING CABINET BASE
D-8-1 SCALE: 1" = 1'-0"



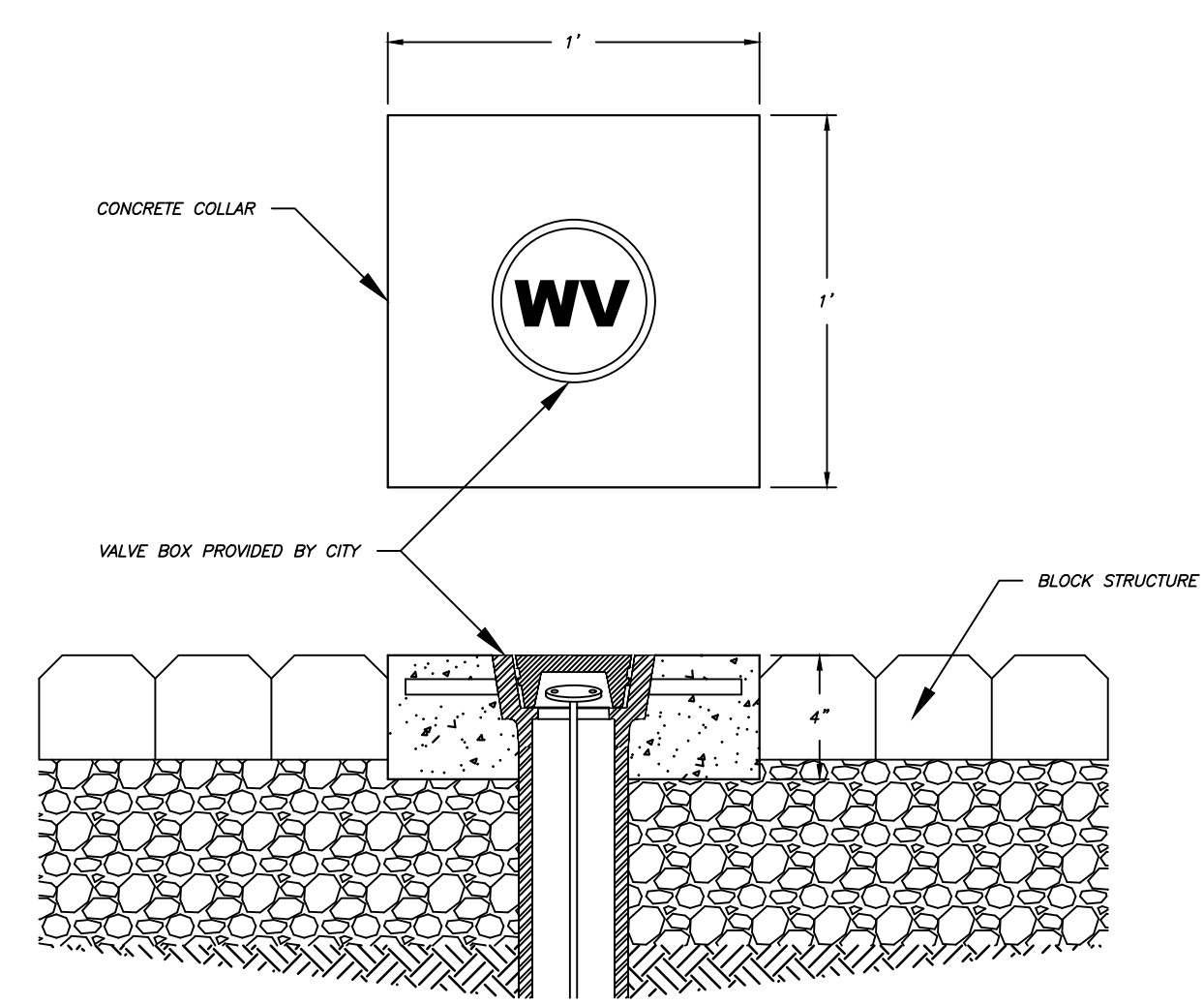
G TYP. PAVER INSTALLATION
D-8-1 SCALE: 1" = 1'-0"



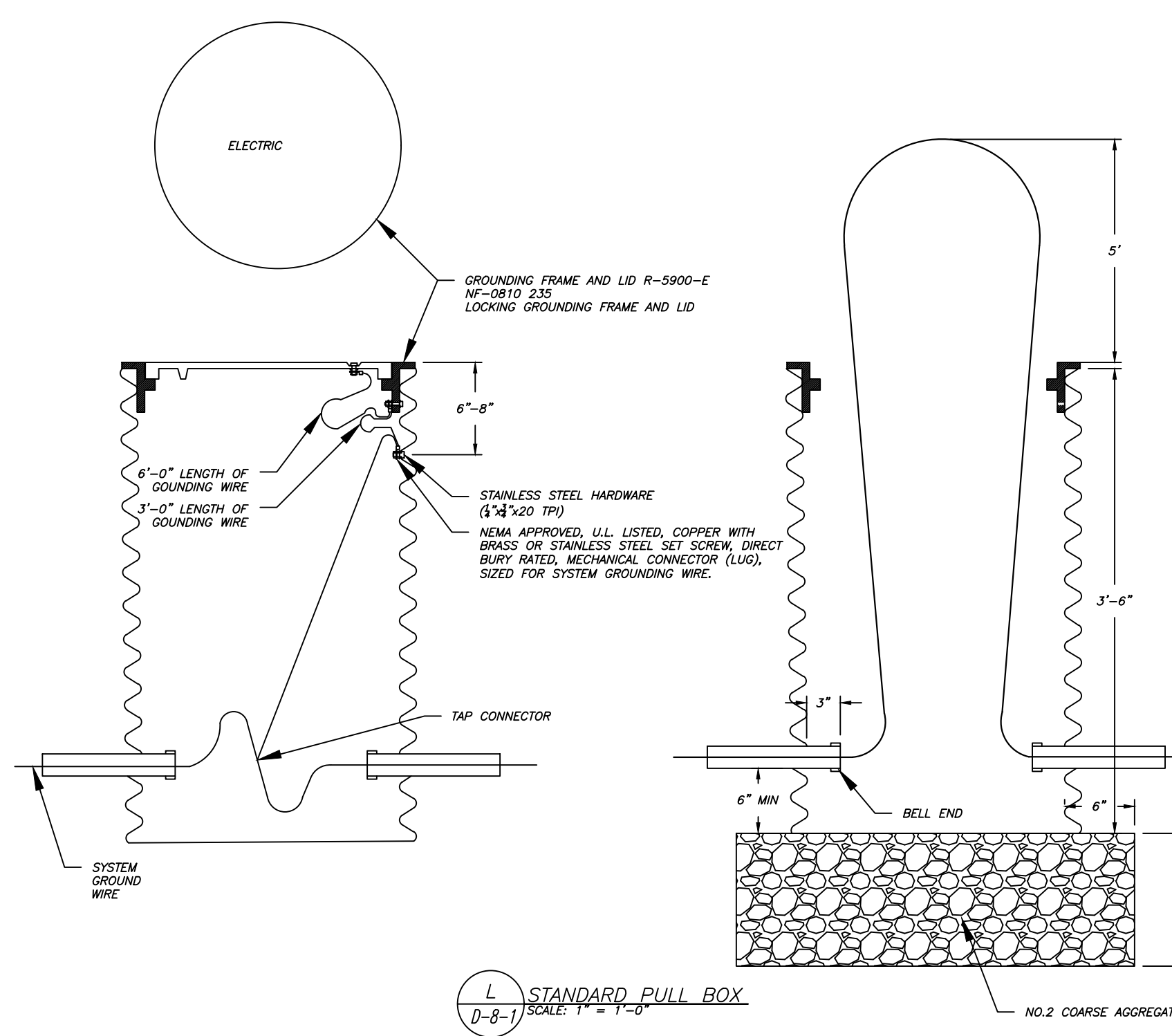
H STREETSCAPE CORNER DETAIL
D-8-1 SCALE: 1" = 1'-0"



J V-LOC INSTALLATION
D-8-1 SCALE: 1" = 0'-8"



K VALVE BOX DETAIL
D-8-1 SCALE: 1" = 0'-8"



L STANDARD PULL BOX
D-8-1 SCALE: 1" = 1'-0"

EDF #	DWG NAME: D-8 series streetscaping.dwg		
PROJECT No.	STREETSCAPE DETAILS		
LOCATION			
RESOLUTION	DATE		
ENGINEERING DEPT.			
City of La Crosse, Wis.			
FIELD BOOK	SURVEYED	BY	DATE
NUMBER	DRAWN	PRELIMINARY	JDH 02/18/20
PAGE	CHECKED	FINAL	MAG 02/18/20
	APPROVED		
	REVISIONS		
SHEET NO. D-8-1	TOTAL SHEETS		