



PFAS Contamination:

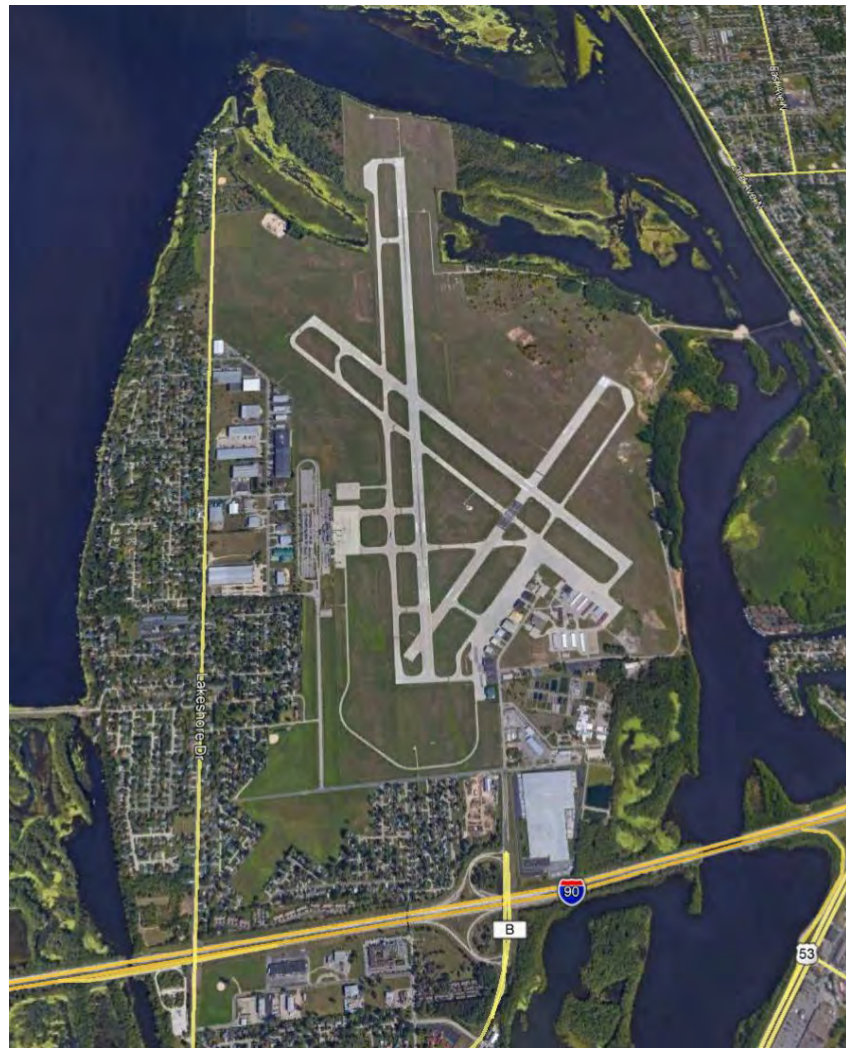
Background, History & Current Understanding

La Crosse Regional Airport

January 21, 2021

Outline

- Introduction to PFAS
- PFAS in Commercial & Consumer Products
- History & Uses of PFAS
- Timeline of PFAS Investigation at LSE
- Private Well Sampling Update
- Next Steps





Introduction to PFAS

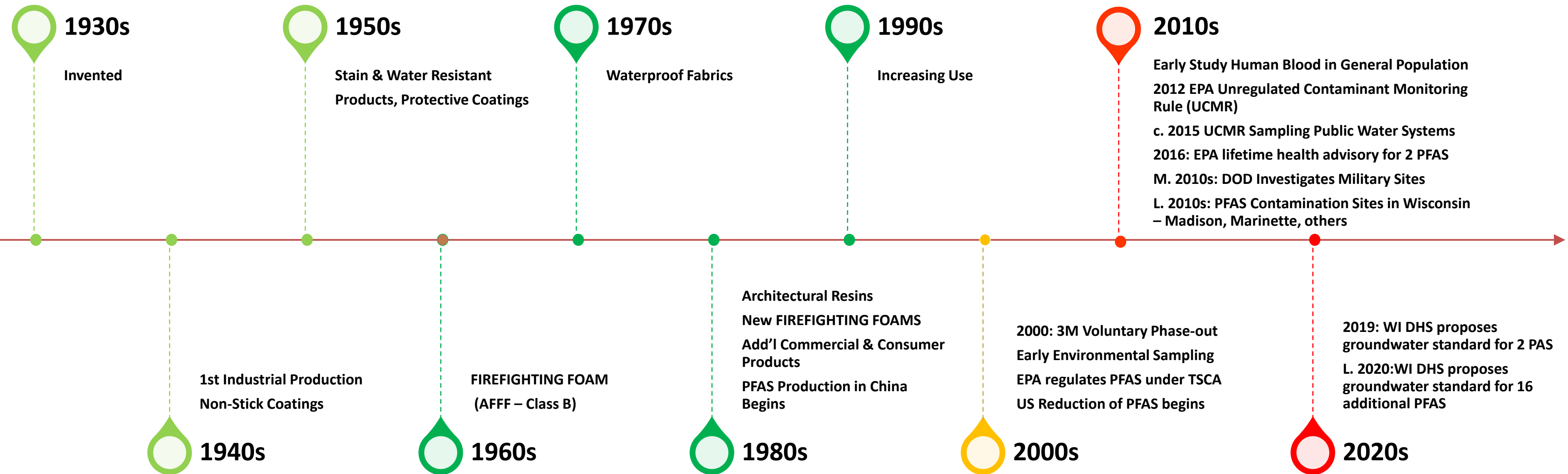
What are PFAS?

- Large class of chemicals (>4000) containing carbon & fluorine
- “Forever Chemicals” do not breakdown in the environment
- Uniquely repel both water and oil
- Widely used in consumer & industrial products 1940s & on
- Aqueous Film Forming Foam (“AFFF”)
- Class B Firefighting Foam

Commercial & Consumer Products with PFAS

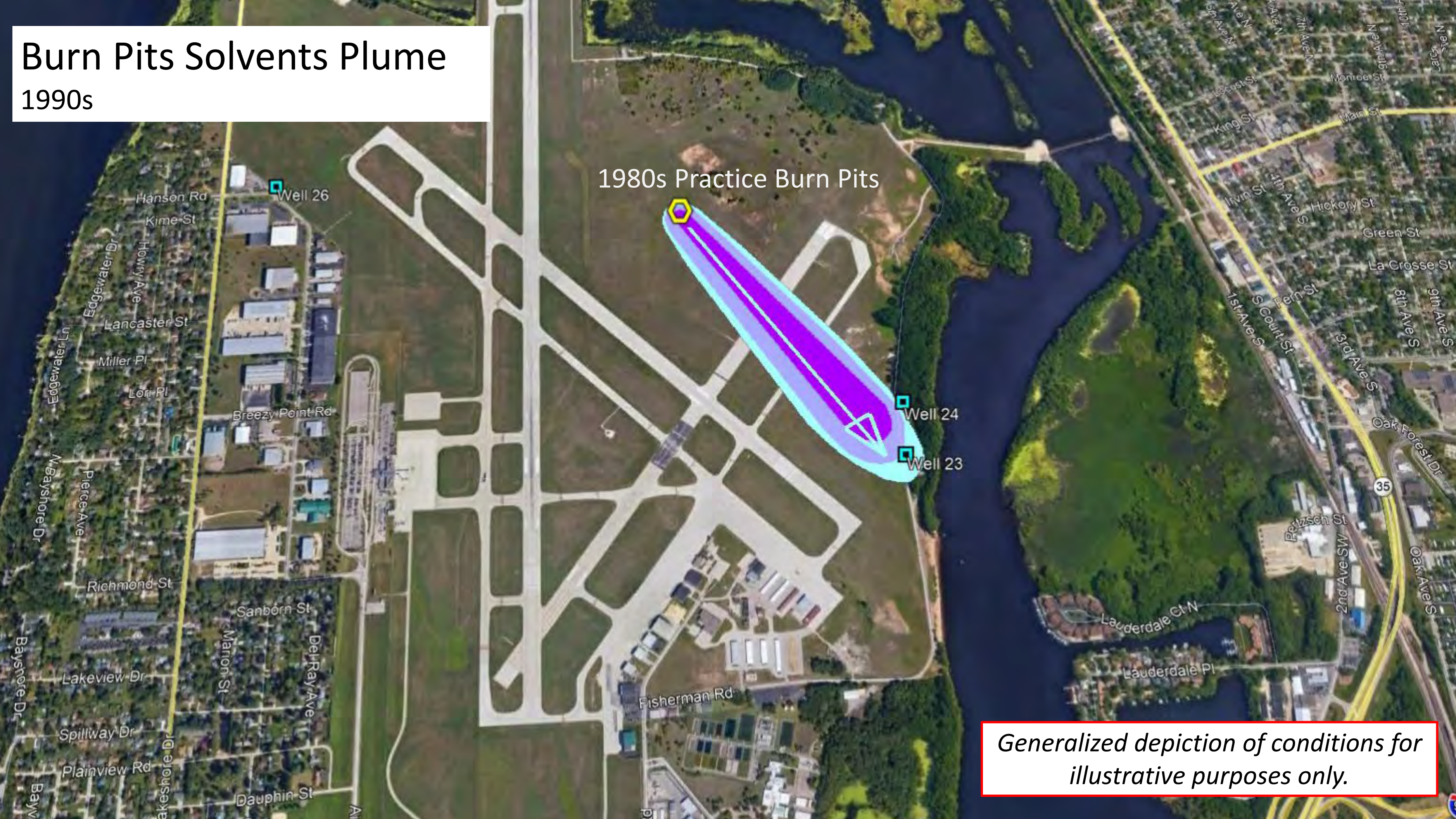
- Paper and packaging
- Clothing and carpets
- Outdoor textiles & sporting equipment
- Ski and snowboard waxes
- **Non-stick cookware**
- Cleaning agents & **fabric softeners**
- Polishes, waxes, & latex paints
- Pesticides & herbicides
- Spray lubricants
- Hydraulic fluids
- Windshield wipers
- Paints, varnishes, dyes & inks
- Adhesives
- Medical products
- **Personal care products** (ex., shampoo, hair conditioners, sunscreen, lipstick, cosmetics, toothpaste, dental floss)

History of PFAS



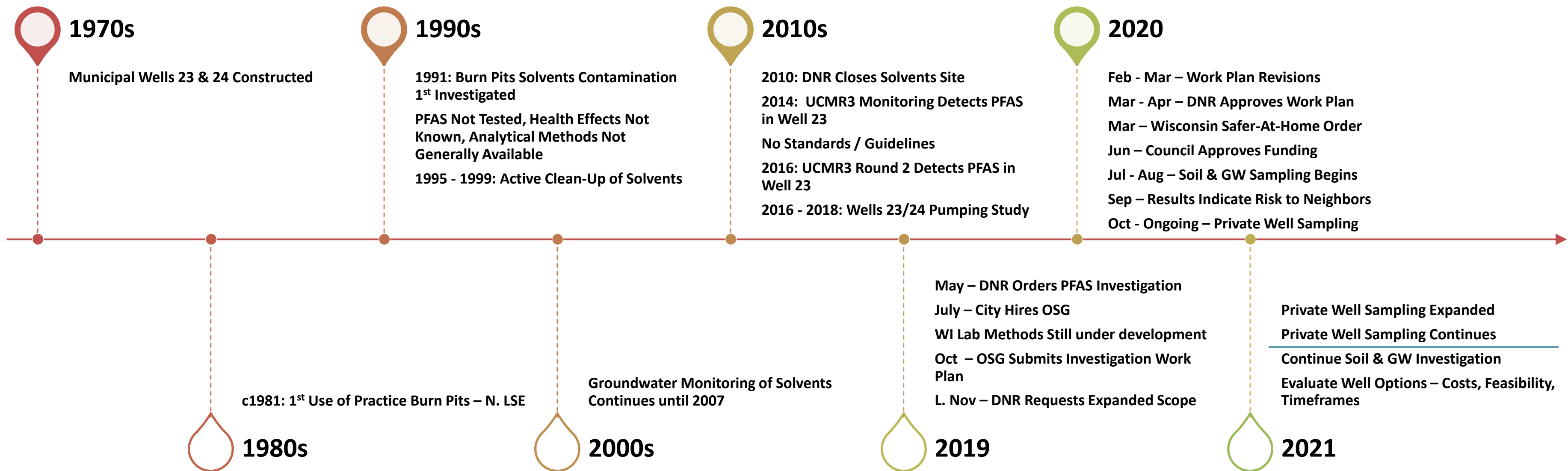
Burn Pits Solvents Plume 1990s

1980s Practice Burn Pits



Generalized depiction of conditions for illustrative purposes only.

Timeline of PFAS Investigation at LSE




Source Areas Investigated

July 2020 - November 2020



Generalized depiction of conditions for illustrative purposes only.



Private Well Sampling (through January 20)

125 wells sampled at **122** properties* (10/27/20 - 1/18/21)

15 samples lab results from are pending

65 samples were **below** DNR's proposed standards

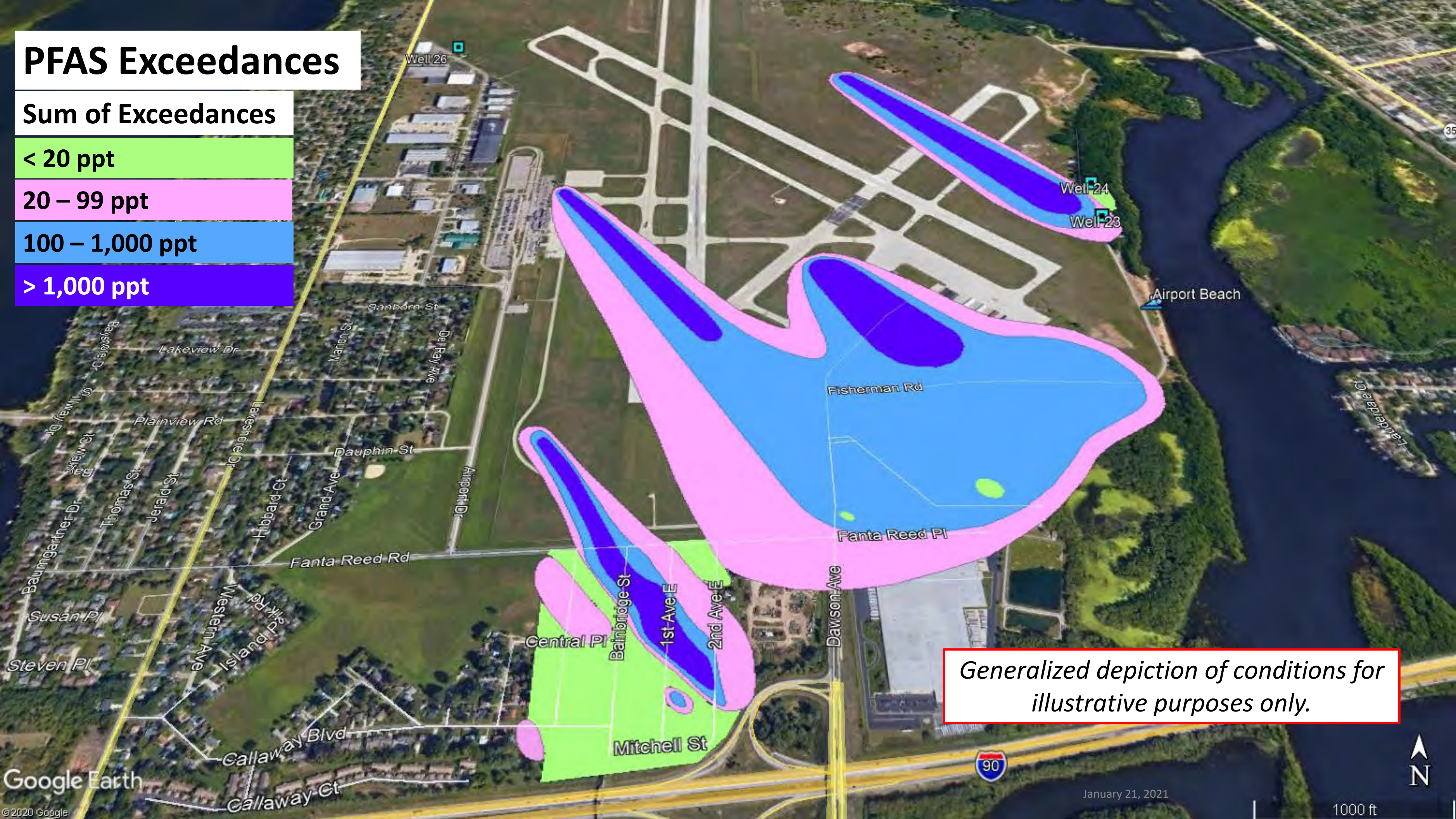
45 samples were **above** DNR's proposed standards

** includes 122 in the Target Sampling Areas & 3 outside*

PFAS Exceedances

Sum of Exceedances

- < 20 ppt
- 20 – 99 ppt
- 100 – 1,000 ppt
- > 1,000 ppt



Generalized depiction of conditions for illustrative purposes only.

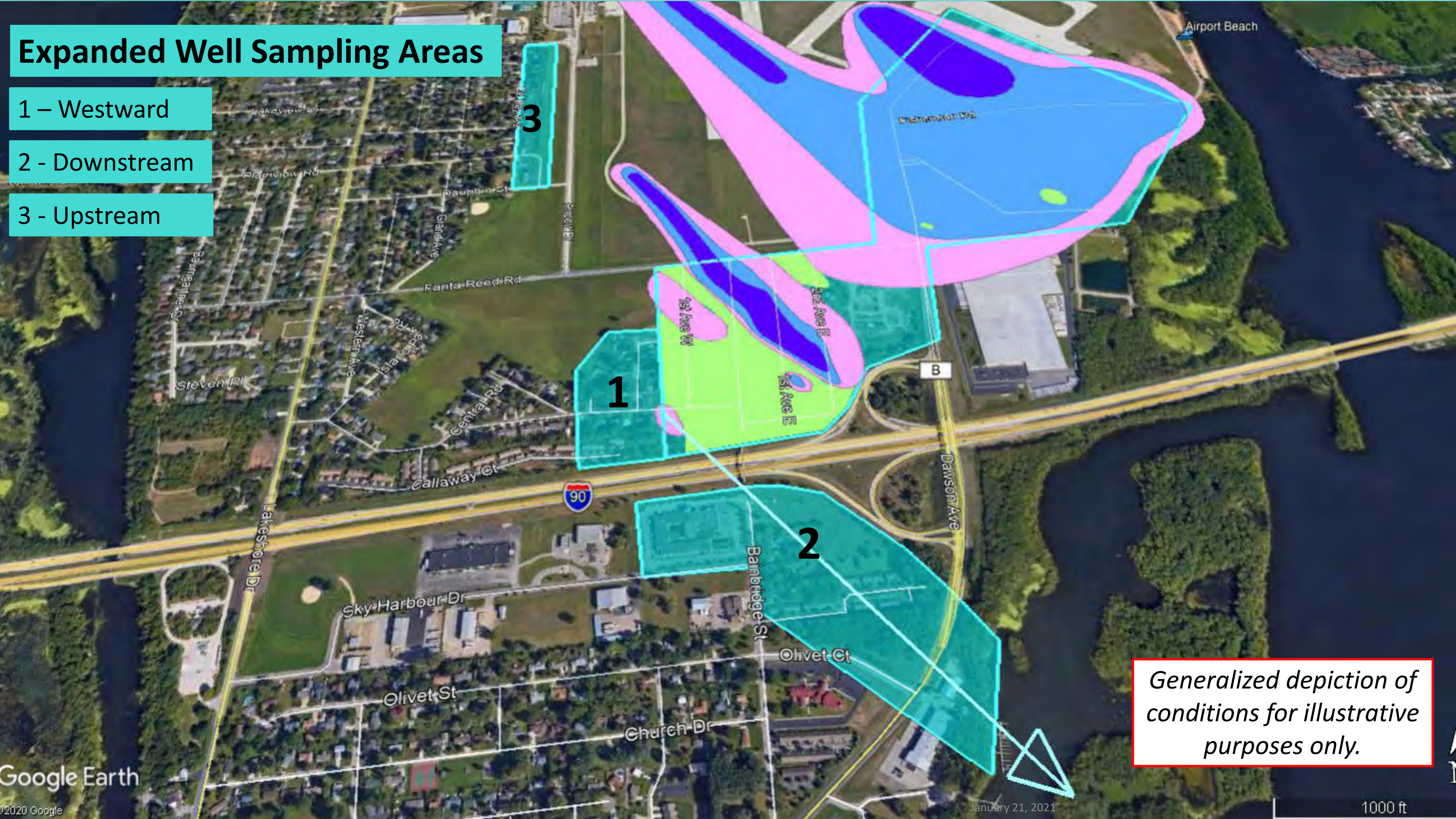


Expanded Well Sampling Areas

1 – Westward

2 - Downstream

3 - Upstream



Generalized depiction of conditions for illustrative purposes only.

Next Steps

- ✓ Resample 8 – 10 wells that were just below standards
- ✓ Letters to about 50 Residents in Expanded Sampling Areas
- Residents are sending access agreements to OS Group
 - Mail, email or online at City webpage
- Continue sampling wells
- Preparing updates for the DNR
- Evaluating Water Supply Options – Costs, Feasibility, Timeframes
- Continuing investigation of groundwater at the airport

For more information

- www.cityoflacrosse.org/wells

The OS Group

John Storlie, PG

PFAS@theOSgrp.com

608-668-2718

City of La Crosse

Tim Kabat, Mayor

kabatt@cityoflacrosse.org

608-789-7500